

User Guide:

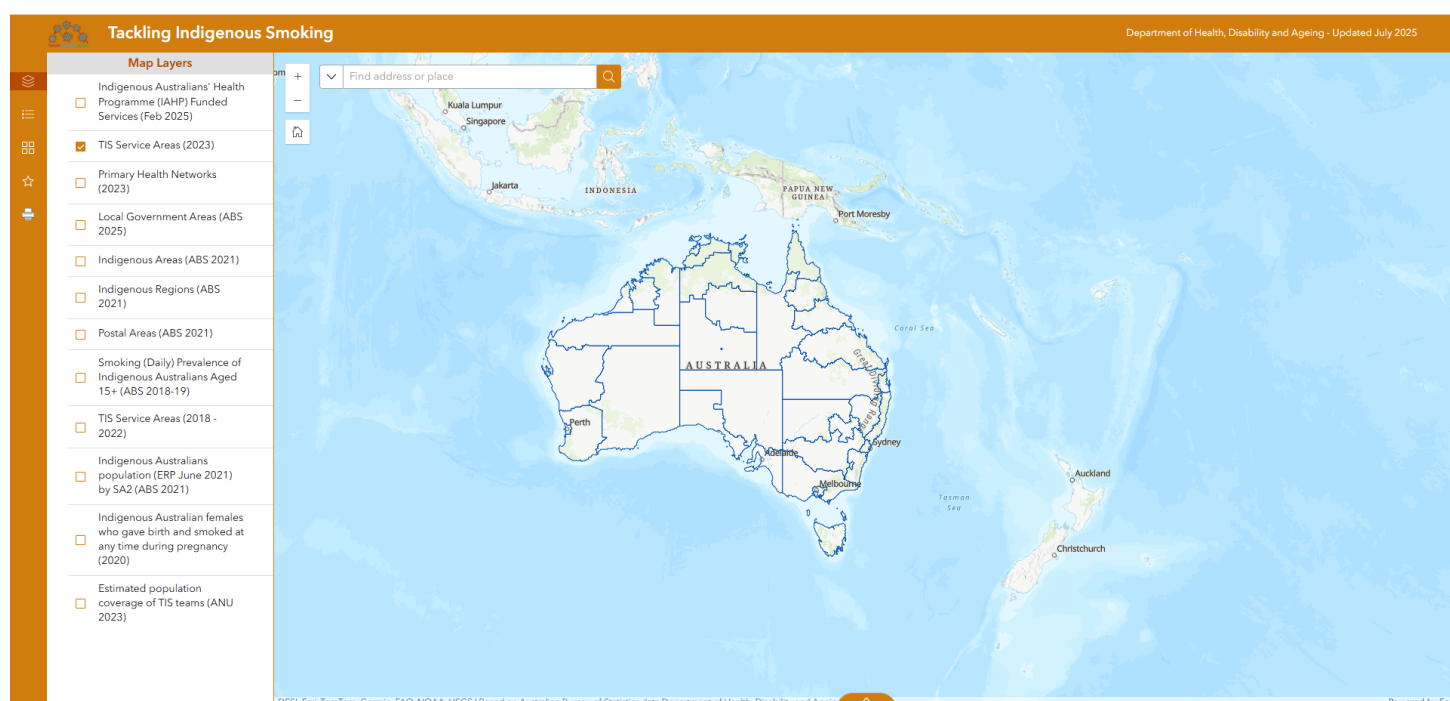
Tackling Indigenous Smoking (TIS) online map

Welcome to the TIS online map user guide. These instructions are a handy reference for learning how to use the map and the tools to help you do things like move around the map, search for an address, investigate the TIS Regional Tobacco Control Group (RTCG) service areas and other information. (RTCGs are organisations funded by the Australian Government to help reduce smoking rates among First Nations peoples).

Using Google Chrome as your web browser is the best option. Other browsers will work but are slower.

<https://tacklingsmoking.org.au/about-the-tis-program/tis-teams/>

The map will look like this when open:



The information provided by the map is available as layers in the 'Map Layers' panel. Each layer is an interactive picture that you can tick on and off to see the visual information.

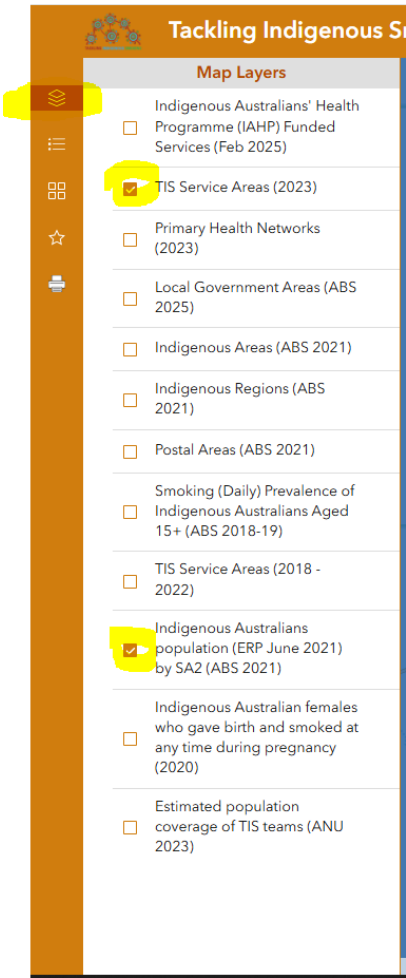
The layer called 'TIS Service Areas (2023)' shows when the map first opens. This shows all the TIS RTCG service area boundaries.

There are some tools you can use to do things like turn map layers on and off, change the type of base (bottom) map, zoom to an area, type in a location to zoom to, and save the map to print.

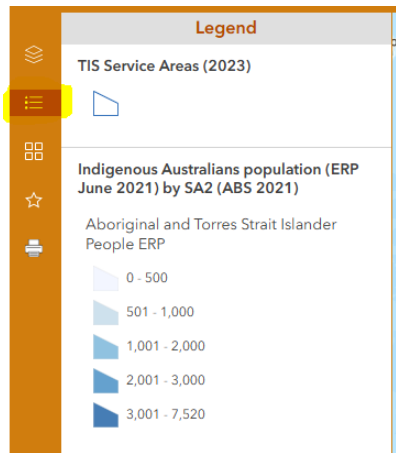
How to use the map tools



MAP LAYERS - All the data layers in the map can be turned on or off. To turn a layer on, click in the tick box next to the layer you would like to see. Untick to turn the layer off on the map.

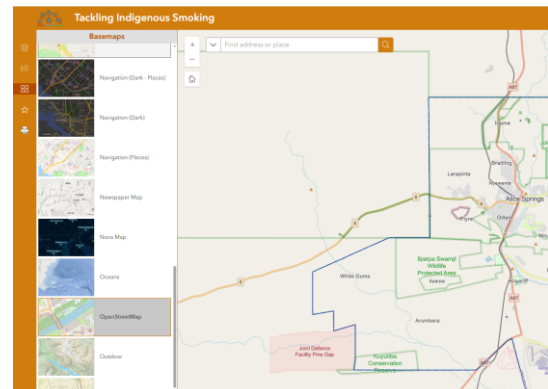
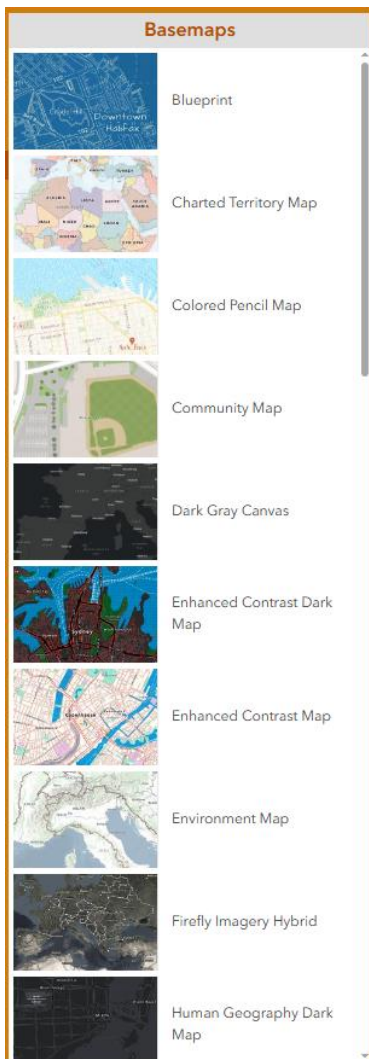


LEGEND - Shows the symbols used for each of the layers you switched on. For example, if the TIS Service Areas and Indigenous Australians population layers are turned on/selected, the Legend will show the TIS Service Areas as blue lines and Indigenous Australians population as areas in shades of blue.

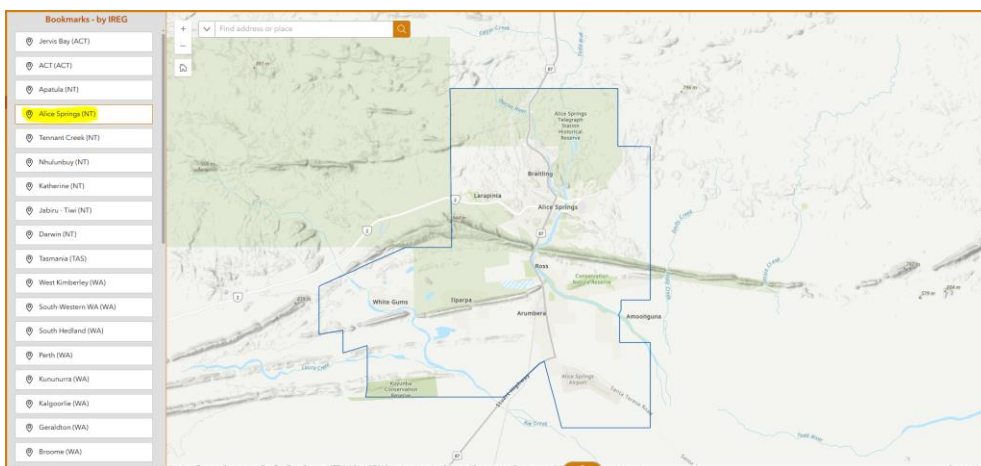




BASE MAPS – Click this if you want to change to a different base map, such as a satellite view, map with roads, towns, geographic features etc.



BOOKMARKS – Click on this to see a list of Indigenous Regions (IREGs). Click an IREG name to zoom to that IREG on the map.





PRINT – this tool enables printing of the map extent. A panel with two tabs appears that will allow you to select the size, title, print extent, distance units and map elements such as a north arrow or a legend. Once you click 'Print' on the first tab, the second tab will show the map created as a pdf file. You can open and download the map

Print templateResults (1)

Template

A3 Landscape

Title

TIS Service Areas - Tennant Creek

Advanced

Map printing extents

Current map extent

Current map scale

Set map scale

Layout options

Author

R. Jones

Copyright

Dept. Health, Disability and Ageing

Include legend

Include north arrow

Scalebar unit

Kilometers

Print quality

96

DPI

Include attributes

Show print area

Print

TIS Service Areas - Tennant Creek

28/08/2025, 13:23:00
TIS Service Areas (2023)

1:5,020,504
0 60 120 240 mi
0 95 190 380 km

Source: Esri, DeLorme, Garmin, FAO, NOAA, USGS, © OpenStreetMap contributors, CNR/VIAVI, © Esri, HERE, DeLorme, Swatch, and the GIS User Community

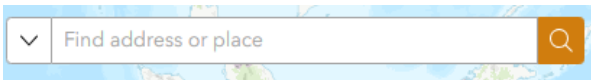
R. Jones
Dept. Health, Disability and Ageing



HOME – click this if you want to go back to see all of Australia, like when the map first opens.



Zoom - Zoom in/out of the map. Alternatively, use the scroll wheel on your mouse to zoom in and out. You can hold down 'Shift' and drag the arrow to select an area you want to zoom in to.



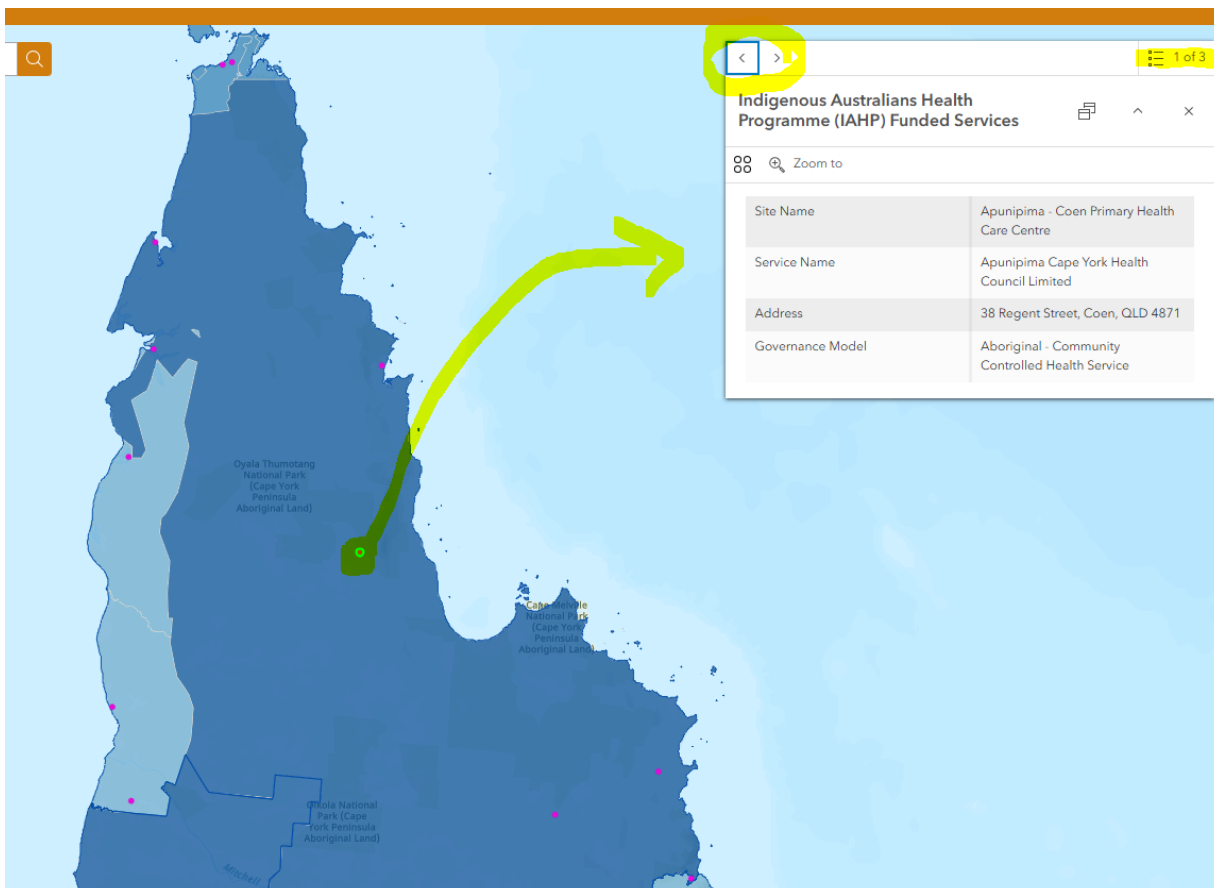
FIND ADDRESS OR PLACE – Search for a location, using an Indigenous or non-Indigenous name. You can type an address in the search bar. Once you start typing, a list of suggested locations appears. You can select from these individual options using your mouse, or the down arrow then pressing 'Enter'. The map will then zoom to that location.

Quick Guide for Common Tasks

Find out the information in an area

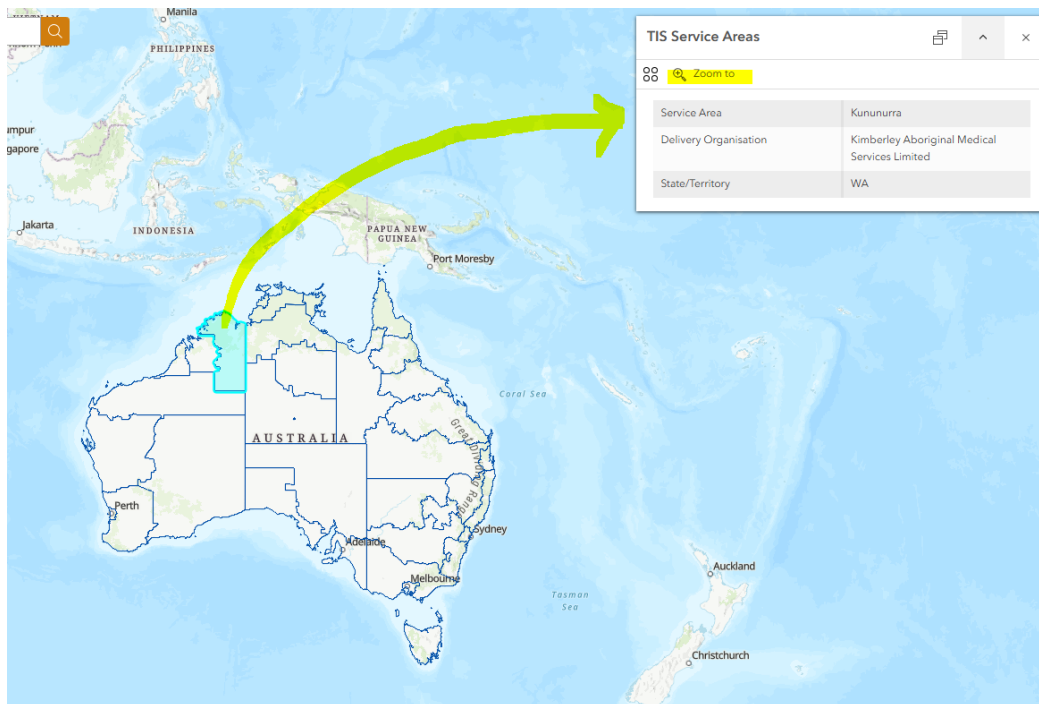
With your map layer/s on, click on the symbol or area on the map that you are interested in. A pop-up box will appear, containing the information related to the symbol or area that you have selected.

If you have multiple layers turned on, a pop-up box will show you information for each map layer that is shown on the map. For example, if you have three layers showing on the map, the pop-up will display '1 of 3' in the top right corner. You can move through the information for each layer using the arrow at the top right of the pop-up.

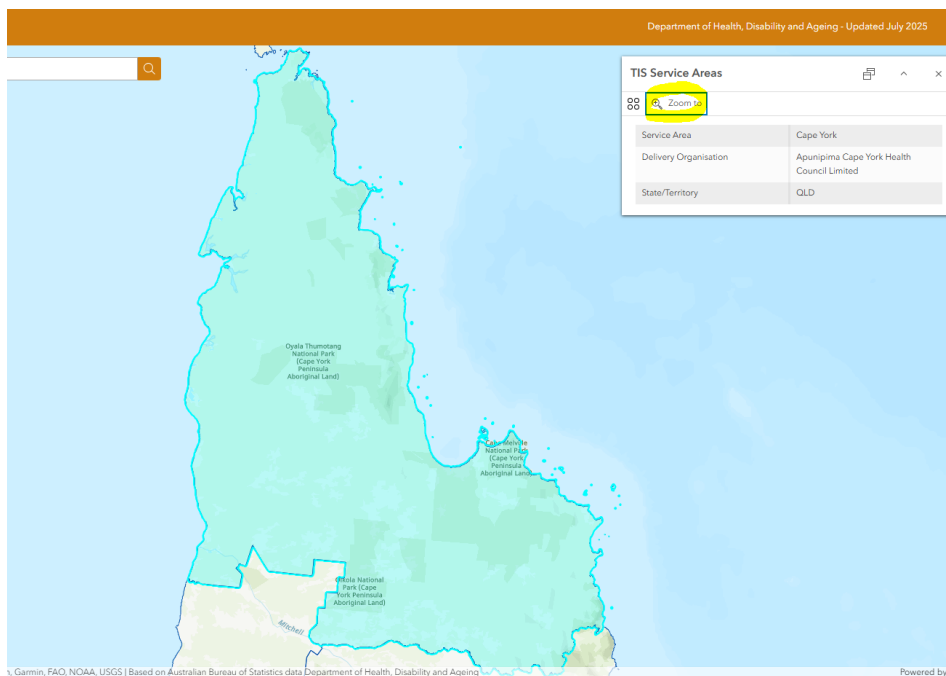


See the extent of a TIS RTCG service area on the map

Select the layer 'TIS Service Areas (2023)'. Click on the TIS area of interest and a pop-up window will show the TIS Service Area name, delivery organisation name and jurisdiction.



Click 'Zoom to' to go to the full extent of the TIS area in the map.



If you have any feedback, have identified a mistake or would like some assistance using the map, please email IndigenousTobacco@health.gov.au