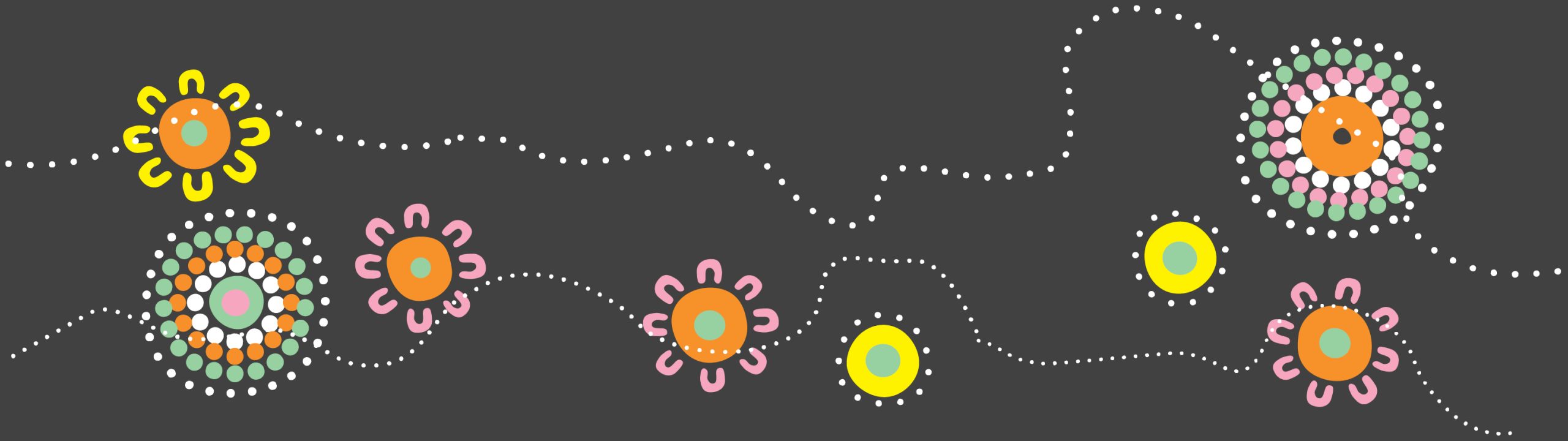




TIS Implementation & Outcome Evaluation Update



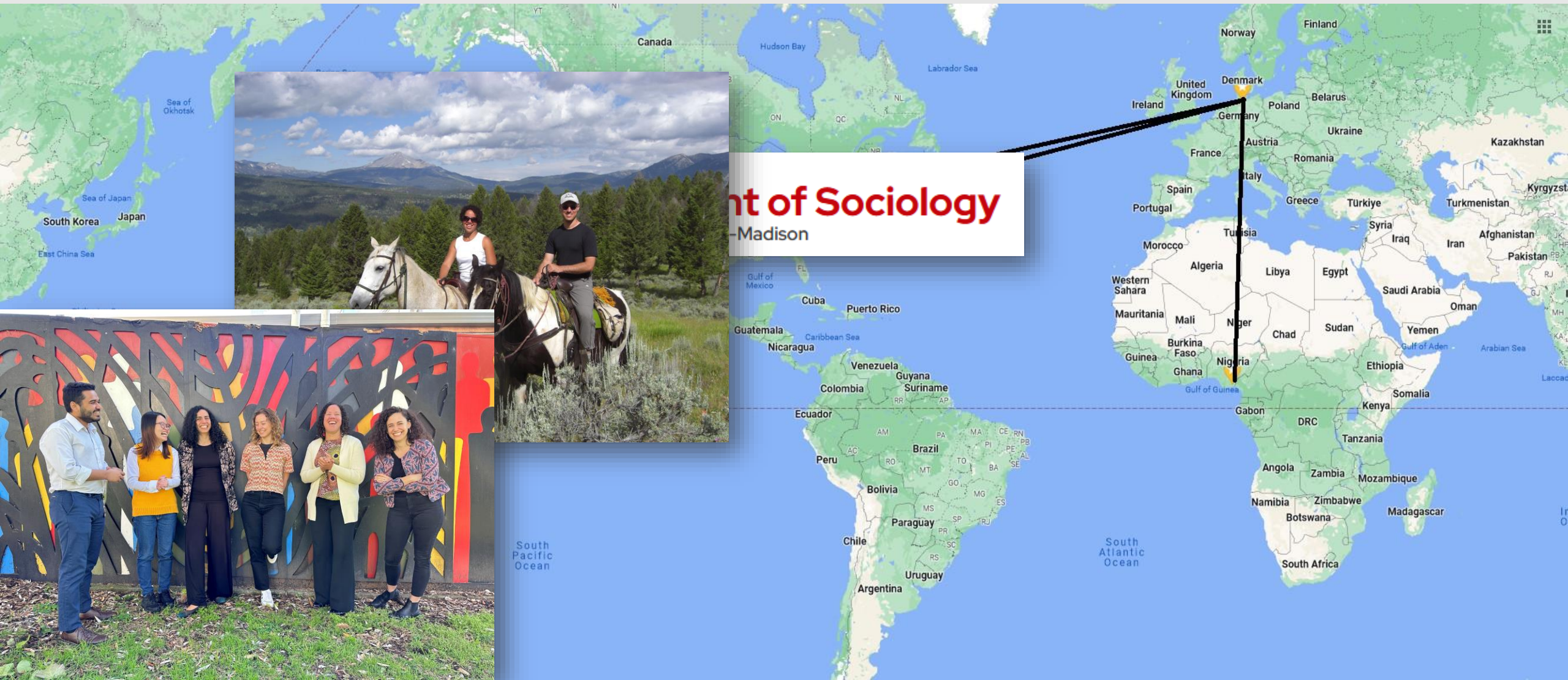
Lena Etuk
CIRCA - Research & Evaluation Director



Acknowledgement of Country

We acknowledge Aboriginal and Torres Strait Islander peoples as the Traditional Custodians of the lands and waters in which we work and the knowledge-holders of the oldest continuous cultures in the world. We pay our respects to Elders past and present.

Who am I?



What is CIRCA?



- Established in 2000
- We specialise in market research & program evaluation with Aboriginal and Torres Strait Islander as well as Culturally and Linguistically Diverse (CALD) communities
- Based in Gadigal Country (Redfern)
- CIRCA network spans the continent
- Our research focuses on culturally inclusive approaches and methods

Meet the Core CIRCA Team



Lena Etuk

Director, Research and
Evaluation



Thushara Dibley

Senior Research Consultant



Wayne Bynder

Community Engagement
Officer - WA



Ly Tong

Research Consultant



Yvonne Weldon

Research Associate



Isabella Saunders

Senior Research Consultant



Ishan Abhisheki

Research Consultant



Carla Soto

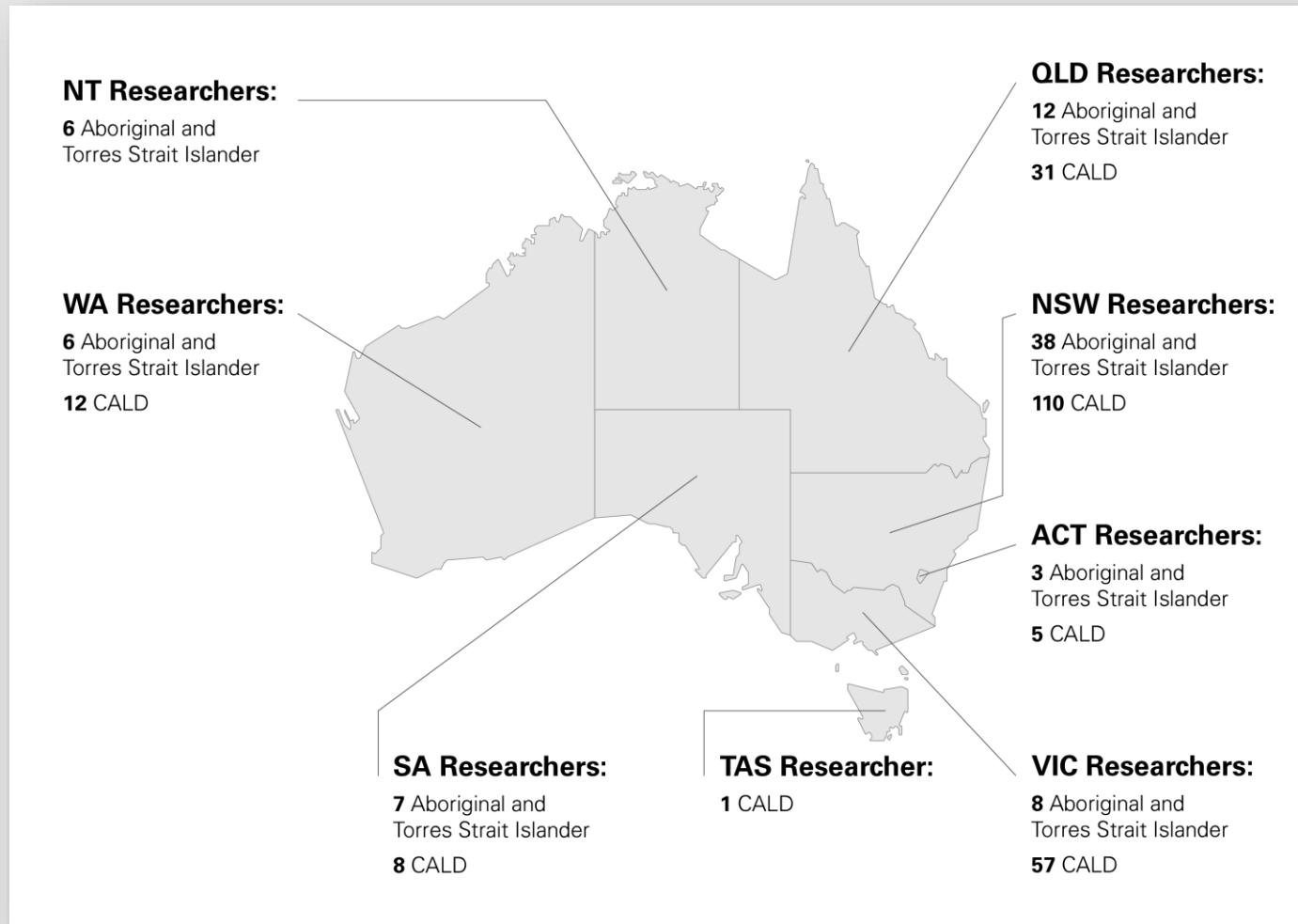
General Manager



Shane D'Angelo

Research Associate - SA

CIRCA's research network



CIRCA's Evaluation of TIS



Our role is to evaluate the implementation of TIS and some outcomes.

Is the program being delivered in a way that best makes it possible to reduce tobacco and vape use among Aboriginal and Torres Strait Islander peoples?

Evaluation Questions

- Is TIS **reaching** all intended communities?
- Are TIS teams **engaging** with local communities and services?
- Are TIS teams **using culturally safe, evidence-based activities**?
- Are TIS teams adequately **supported**?
- What are the **barriers, enablers, and opportunities** for improvement across all of the above?
- Are TIS teams seeing **changes in knowledge and attitudes** towards tobacco and e-cigarette control at the community level?
 - What do TIS teams think have been the **most successful activities** and why?
What **challenges** have TIS teams faced in changing knowledge and attitudes, and **how have they dealt with them**?



Evaluation data collection methods

- Qualitative & quantitative data collection, across 3 waves

Wave 1 (2023-2024)

- TIS Grant Recipient Organisation CEO survey (online with all)
- TIS Coordinator/Manager Interviews (phone with 37)
- TIS Staff Survey (online with all)
- National Coordinator interview (phone/online)
- NBPU staff focus group (online)
- DOH staff focus group (online)
- Activity Work Plans analysis
- Performance Reports analysis
- Grant acquittal analysis
- NBPU Progress Report analysis

Wave 2 (2025)

- TIS Staff Focus Group (in-person with 15 TIS Teams)
- TIS Staff Focus Group (online with 22 TIS Teams)
- TIS Grant Recipient Organisation CEO survey (online with all)
- TIS Coordinator/Manager Interviews (phone with 37)
- TIS Staff Survey (online with all)
- National Coordinator interview (phone/online)
- NBPU staff focus group (online)
- DOH staff focus group (online)
- Activity Work Plans analysis
- Performance Reports analysis
- Grant acquittal analysis
- NBPU Progress Report analysis

Wave 3 (2026)

- Activity Work Plans analysis
- Performance Reports analysis
- Grant acquittal analysis
- NBPU Progress Report analysis

Where we're up to in the evaluation today



Planning

- Framework
- Plan
- Data collection tools
- Ethics approvals

Wave 1

- PR & AWP Data receipt
- Surveys, interviews
- Data analysis
- Reporting


Wave 2

- PR & AWP Data receipt
- Surveys, interviews, Focus groups
- Data analysis
- Reporting

Wave 3

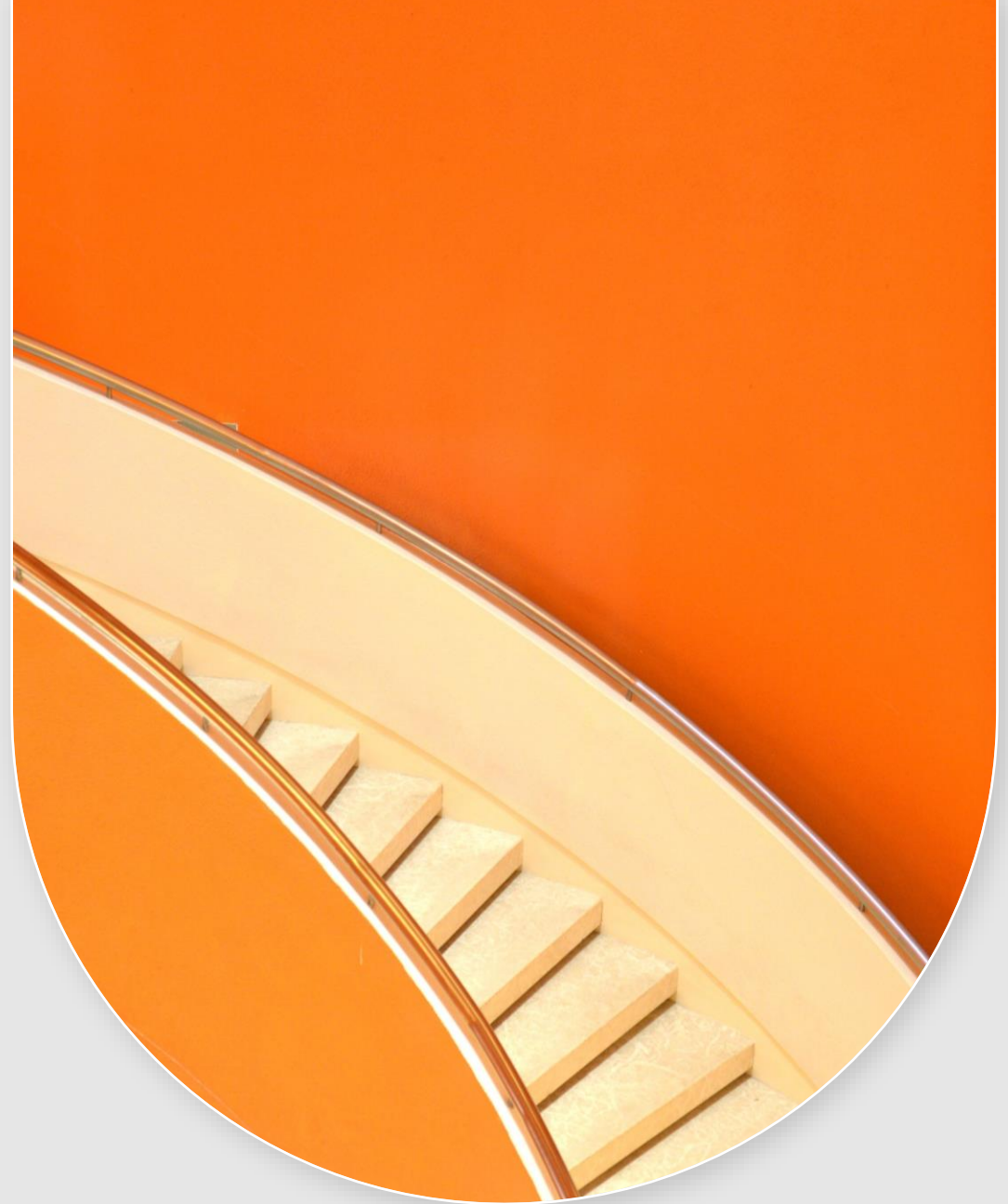
- PR & AWP Data receipt
- Data analysis
- Reporting

Initial Preliminary Wave 1 findings

- 
- From a National Stakeholder perspective, the program appears to be starting on a strong and positive note
 - In a small number of IREGs, RTCG organisations report planning to reach less than 50 per cent of the LGAs in their IREG.
 - Early findings about cultural safety and the use of evidence suggest that TIS Teams are well placed to deliver culturally safe and evidence-based activities. In future reports it will be important to draw on other data sources to gain deeper insights into the extent to which activities are evidence-based.
 - Early findings on partnerships with sub-contracted partners suggest a need for National Supports to continue to support RTCGs who are facing difficulties with developing partnerships.

Next steps

- Finalise Preliminary Wave 1 Report
 - Integrate data from Jan 2024 Performance Reports
- Commence qualitative data collection for Full Wave 1 Report
 - Please keep your eye on your inboxes for:
 - invitations to participate in the TIS CEO Survey
 - invitations for your TIS team staff to participate in interviews and the TIS staff survey in the coming months



Please reach out to us!



Questions?



Feedback?



Anything else?



Lena Etuk

lena@circaresearch.com.au

Email me ----- >



Thushara Dibley

thushara@circaresearch.com.au



We're the experts in culturally sensitive research, policy and evaluation

Our team offers insights derived from 20+ years of experience working with diverse communities and Aboriginal and Torres Strait Islander communities in remote, rural and urban settings.

We speak more than 50 languages. We'll make sure your questions are heard. You'll trust in our methods and value the clarity our research brings.



+61 2 8585 1313



info@circaresearch.com.au



16 Eveleigh St, Redfern NSW 2016