

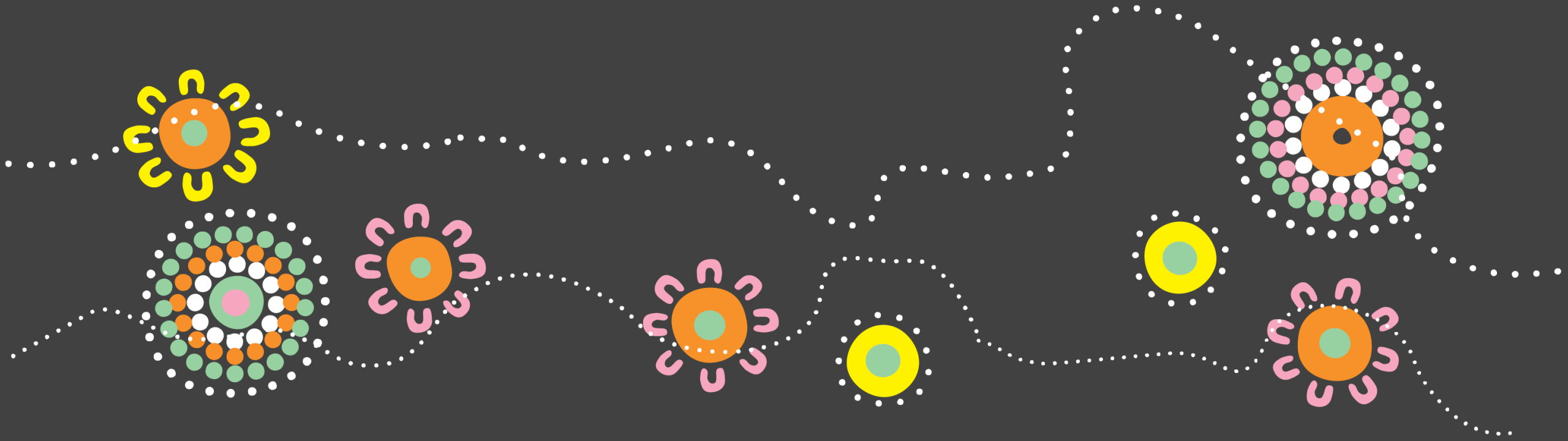
13 March 2024



TIS Process & Outcome Evaluation Update



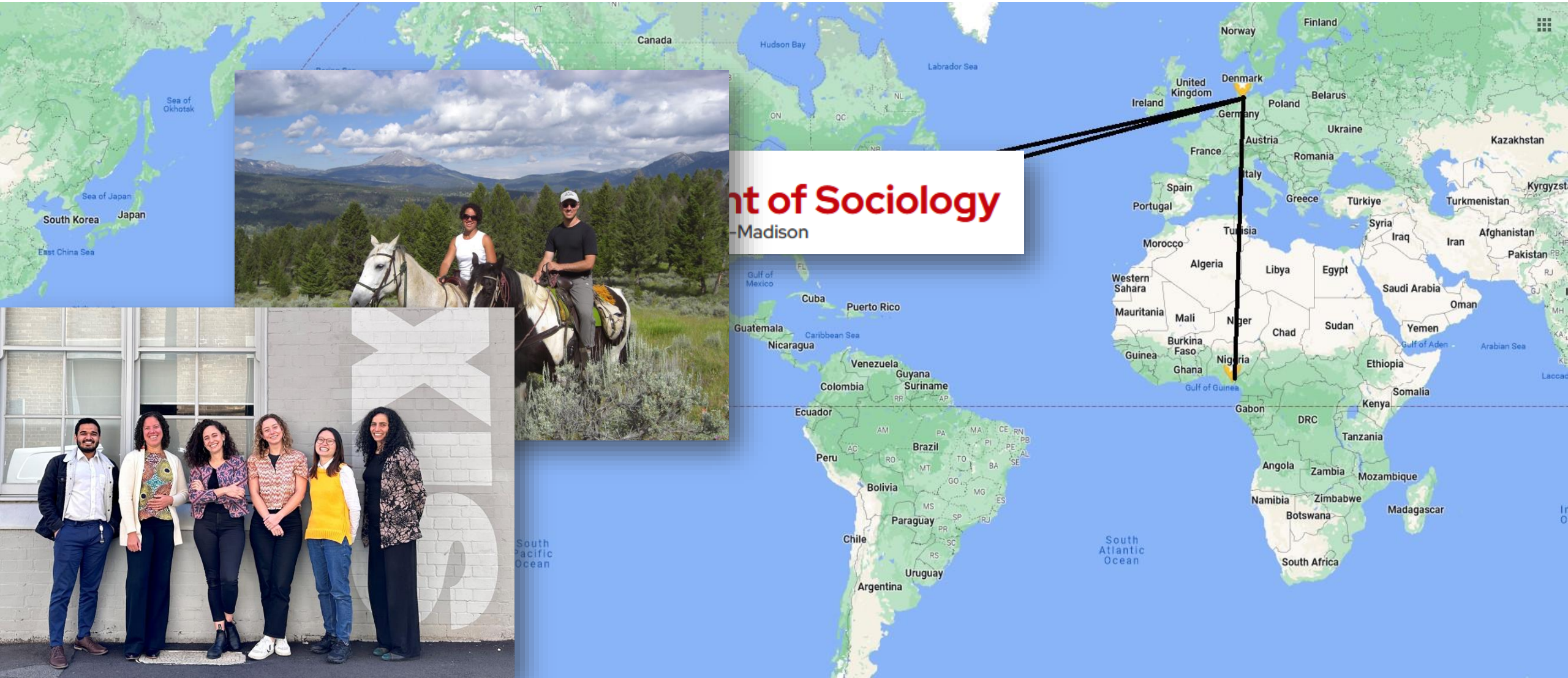
Lena Etuk
CIRCA - Research &
Evaluation Director



Acknowledgement of Country

We acknowledge Aboriginal and Torres Strait Islander peoples as the Traditional Custodians of the lands and waters in which we work and the knowledge-holders of the oldest continuous cultures in the world. We pay our respects to Elders past and present.

Who am I?



What is CIRCA?



- Established in 2000
- We specialise in market research & program evaluation with Aboriginal and Torres Strait Islander as well as Culturally and Linguistically Diverse (CALD) communities
- Based in Gadigal Country (Redfern)
- CIRCA network spans the continent
- Our research focuses on culturally inclusive approaches and methods

Meet the Core CIRCA Team



Lena Etuk

Director, Research and Evaluation



Thushara Dibley

Senior Research Consultant



Wayne Bynder

Community Engagement Officer - WA



Ly Tong

Research Consultant



Yvonne Weldon

Research Associate



Isabella Saunders

Senior Research Consultant



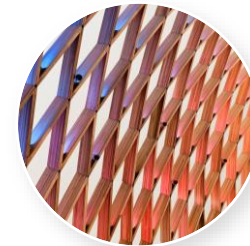
Ishan Abhisheki

Research Consultant



Carla Soto

General Manager



Cayley Weldon-Bowen

Project Support



Shane D'Angelo

Research Associate

CIRCA's research network

NT Researchers:

6 Aboriginal and
Torres Strait Islander

WA Researchers:

6 Aboriginal and
Torres Strait Islander
12 CALD



QLD Researchers:

12 Aboriginal and
Torres Strait Islander
31 CALD

NSW Researchers:

38 Aboriginal and
Torres Strait Islander
110 CALD

ACT Researchers:

3 Aboriginal and
Torres Strait Islander
5 CALD

SA Researchers:

7 Aboriginal and
Torres Strait Islander
8 CALD

TAS Researcher:

1 CALD

VIC Researchers:

8 Aboriginal and
Torres Strait Islander
57 CALD

If you know anyone who might like to join the network, send them the EOI



Mentimeter Pre-Poll



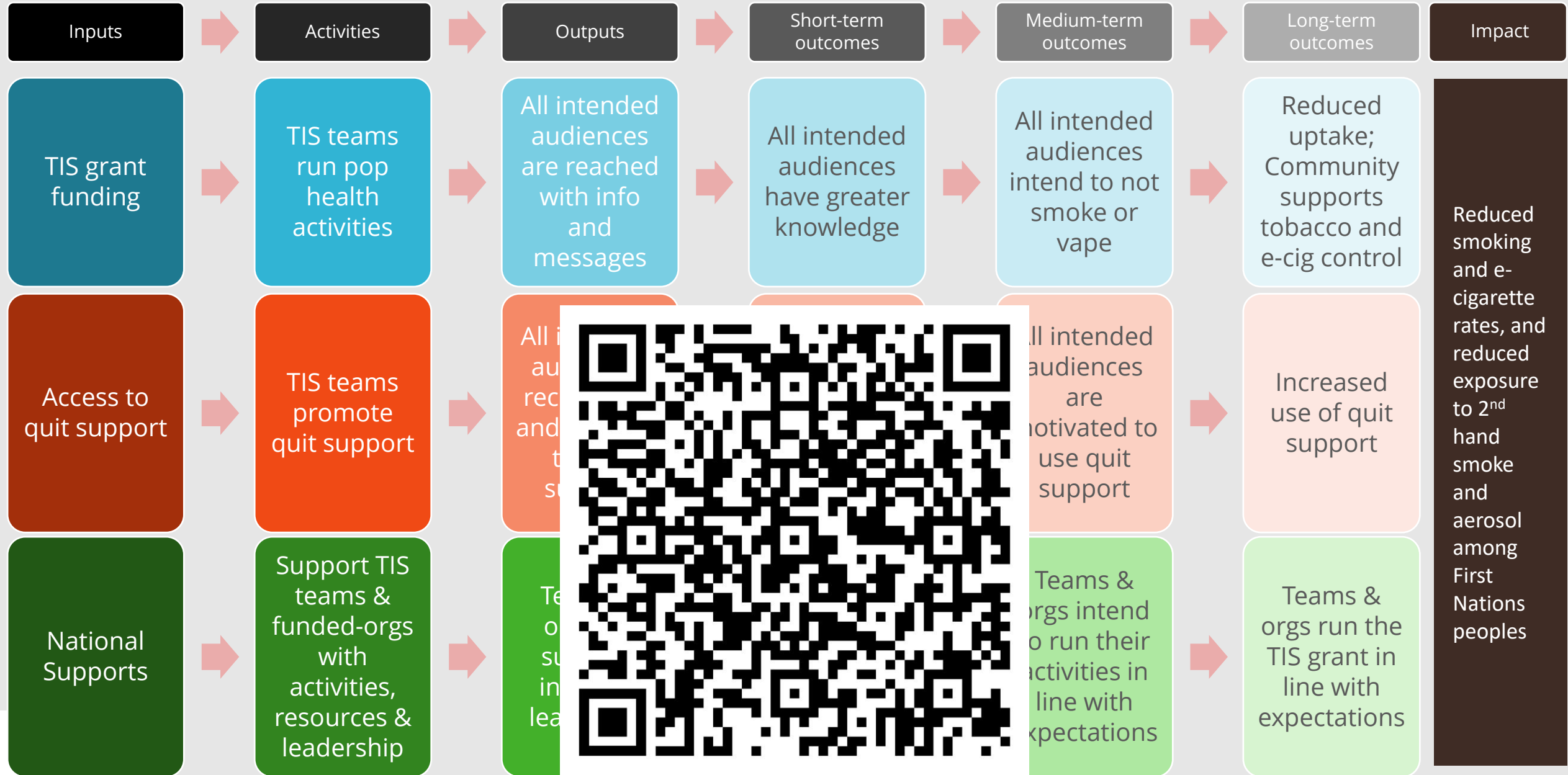
Go to

www.menti.com

Enter the code

11 64 759

The TIS program (as a Logic Model)



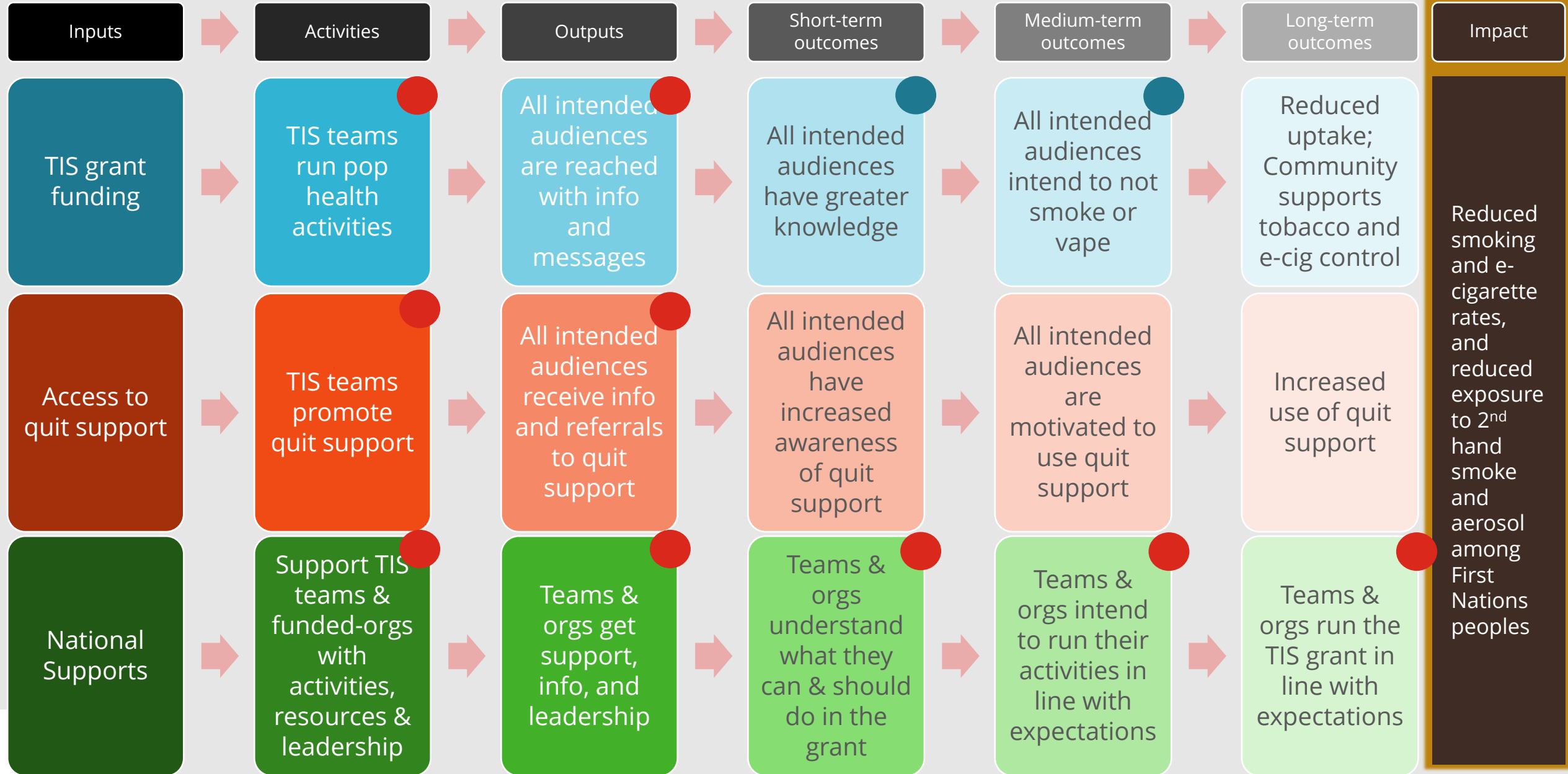
CIRCA's Evaluation



Our role is to evaluate the implementation of TIS and some outcomes.

Is the program being delivered in a way that best makes it possible to reduce tobacco and vape use among Aboriginal and Torres Strait Islander peoples?

CIRCA's process & outcome evaluation



Evaluation needs... DATA!

Short-term outcomes

All intended audiences have greater knowledge

- One of the things we want to measure is:
 - All Aboriginal and Torres Strait Islander groups, and people who do not use tobacco and e-cigarettes, the harms of tobacco and e-cigarette uptake
- How we will measure it:
 - We'll rely on TIS teams' reports about the harms of tobacco and e-cigarettes and their uptake has changed as a result of the activity
- Data come from:
 - Performance Report

What outcomes have you observed as a result of this activity, in this 6-month period?*

The observed outcomes below should be based on the aims you selected previously. If an aim was not selected, do not complete the corresponding outcome.

If you indicated earlier that this activity is linked to **Aim 1** – Reduce uptake of smoking or recreational use of vapes:

Please fill in your observations of what has resulted from the activity

(enter '0' if your team did not observe a particular result, or if you are not sure if your team observed a particular result)

25%

Percentage of activity participants that increased their knowledge about harms of tobacco and vape use:

25%

Percentage of activity participants that increased their knowledge of the benefits of not using tobacco or vapes:

5%

Percentage of activity participants that decreased their intention to use tobacco or vapes:

0%

Percentage of activity participants that achieved other usage outcomes:

Evaluation needs... DATA!

Long-term
outcomes

Teams &
orgs run the
TIS grant in
line with
expectations

- One of the things we want to measure here:
 - TIS teams design activities so that they target all priority groups, all Aboriginal and Torres Strait Islander communities within their IREG, and all people who do not attend ACCHOs
- How we will measure it:
 - All of the planned activities across all AWP's suggest that TIS teams will reach all priority groups, all Aboriginal and Torres Strait Islander communities across IREGs, and all people who do not attend ACCHOs
- Data come from:
 - Activity Work Plan
 - Questions: 7, 13, 14

Where we're up to in the evaluation today

Planning

- Framework
- Plan
- Data collection tools
- Ethics approvals

Wave 1

- PR & AWP Data receipt
- Surveys, interviews
- Data analysis
- Reporting

Wave 2

- PR & AWP Data receipt
- Surveys, interviews, Focus groups
- Data analysis
- Reporting

Wave 3

- PR & AWP Data receipt
- Data analysis
- Reporting

Mentimeter Post-Poll



Go to

www.menti.com

Enter the code

5971 5815

Discussion



Questions?



Lena Etuk

lena@circaresearch.com.au



Feedback?



Thushara Dibley

thushara@circaresearch.com.au



Implications?



We're the experts in culturally sensitive research, policy and evaluation

Our team offers insights derived from 20+ years of experience working with diverse communities and Aboriginal and Torres Strait Islander communities in remote, rural and urban settings.

We speak more than 50 languages. We'll make sure your questions are heard. You'll trust in our methods and value the clarity our research brings.

 +61 2 8585 1313

 info@circaresearch.com.au

 16 Eveleigh St, Redfern NSW 2016

Evaluation needs... DATA!

Activities

TIS teams
promote
quit support

- One of the things we want to measure here:
 - Partnerships are formed between TIS teams and quit support services and/or services that refer to quit supports
- How we will measure it:
 - # of partnerships formed between TIS teams and quit support services
 - # of partnerships formed between TIS teams and services that refer
- Data come from:

| QUIT Support Partnerships | |
|--|--|
| How many partnerships does your TIS Team have with quit support services?* | |
| How many partnerships does your TIS Team have with services that refer to quit supports? | |
| | |

Mentimeter Poll



Go to

www.menti.com

Enter the code

7507 7644

Mentimeter Poll



Go to

www.menti.com

Enter the code

1544 1705

What kind of eval?

Mentimeter Poll



Go to

www.menti.com

Enter the code

4897 6678

PR & AWP link to eval