

# National Remote Regions TIS Workshop

“strategic overview and what for the future”



Video Conference  
22 February 2022



**Prof Tom Calma AO**

National Coordinator Tackling Indigenous Smoking



# Today's programme

**TIS program extension** - Improving TIS coverage and reducing smoking rates in remote communities

**Katherine - Dept of Health**

**TIS program evaluation** – highlights and key findings – **Part A - Lena (CIRCA)**

**TIS impact evaluation** and related research – highlights and key findings - **Part B – Raglan - ANU**

The Tobacco Control **Guide** - **David - AMSANT**

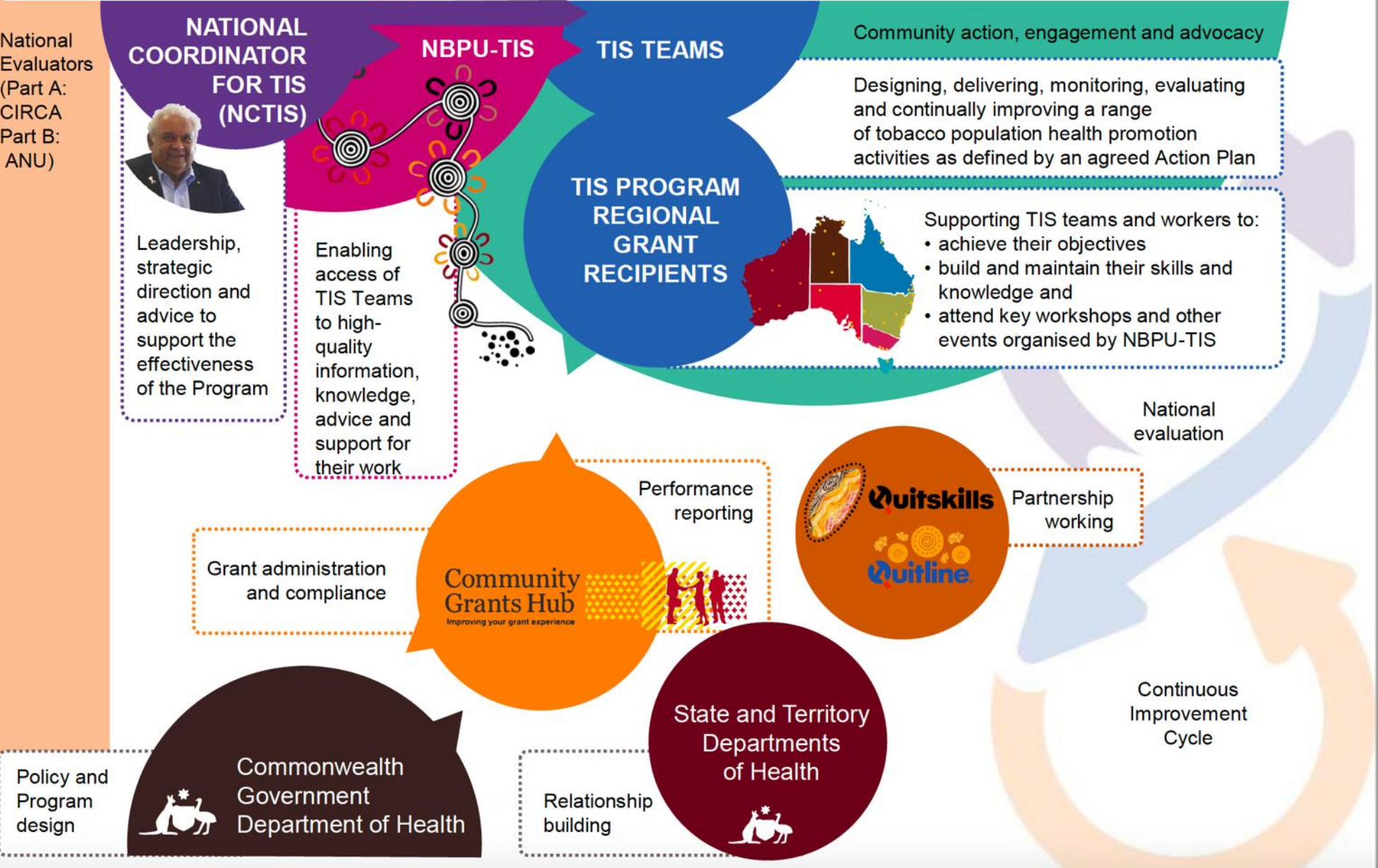
**Group Activity** (breakout rooms): eg Using evaluation findings to improve TIS Program activities in remote and very remote Australia – **Glenn & Penney**

**Q & A session** from the field. Includes highlights of examples of good practices - **Glenn**



Overview of TIS Program processes

NATIONAL EVALUATION PERFORMANCE INDICATORS FOR TIS

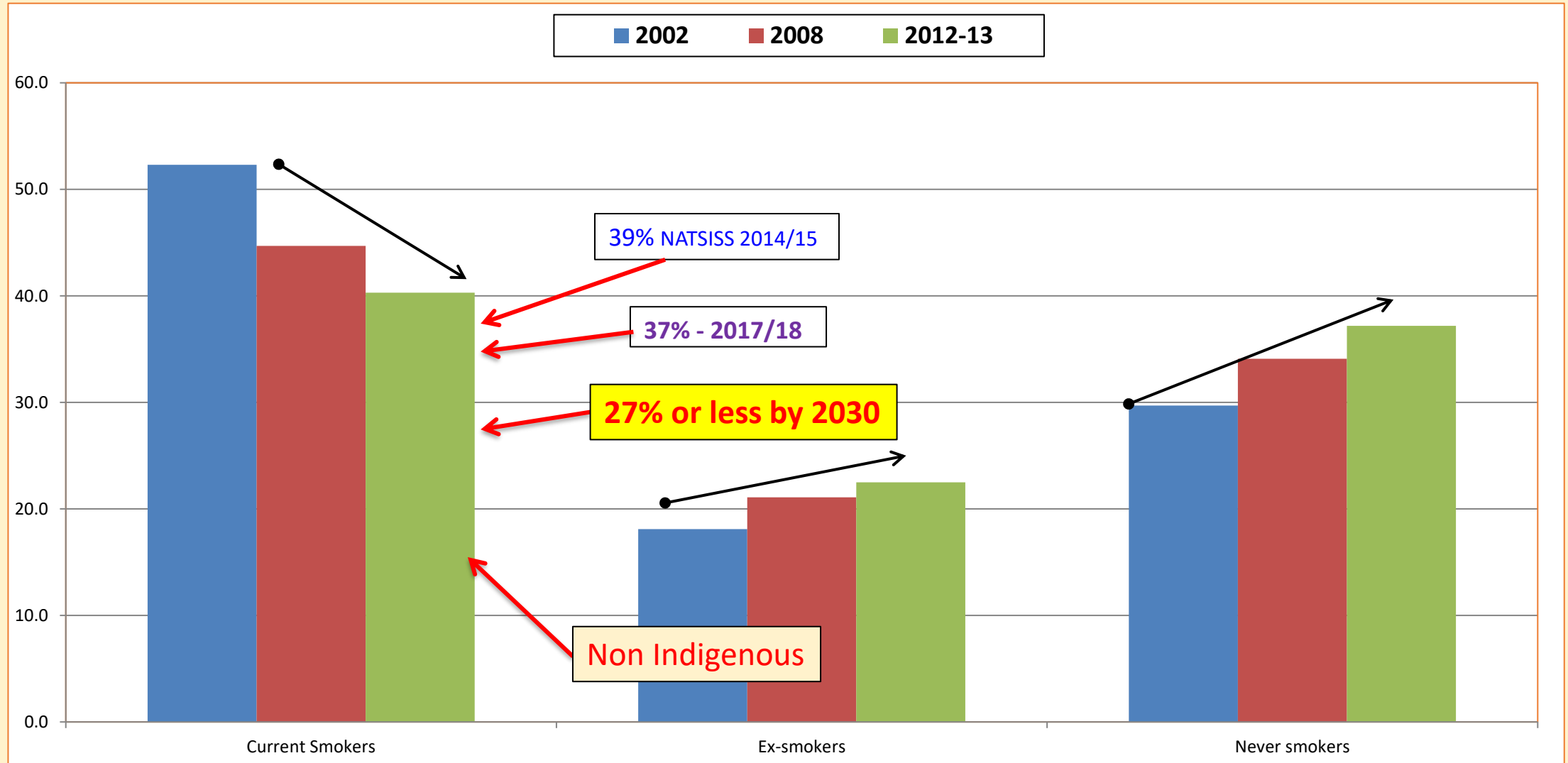


Tackling  
Indigenous  
Smoking

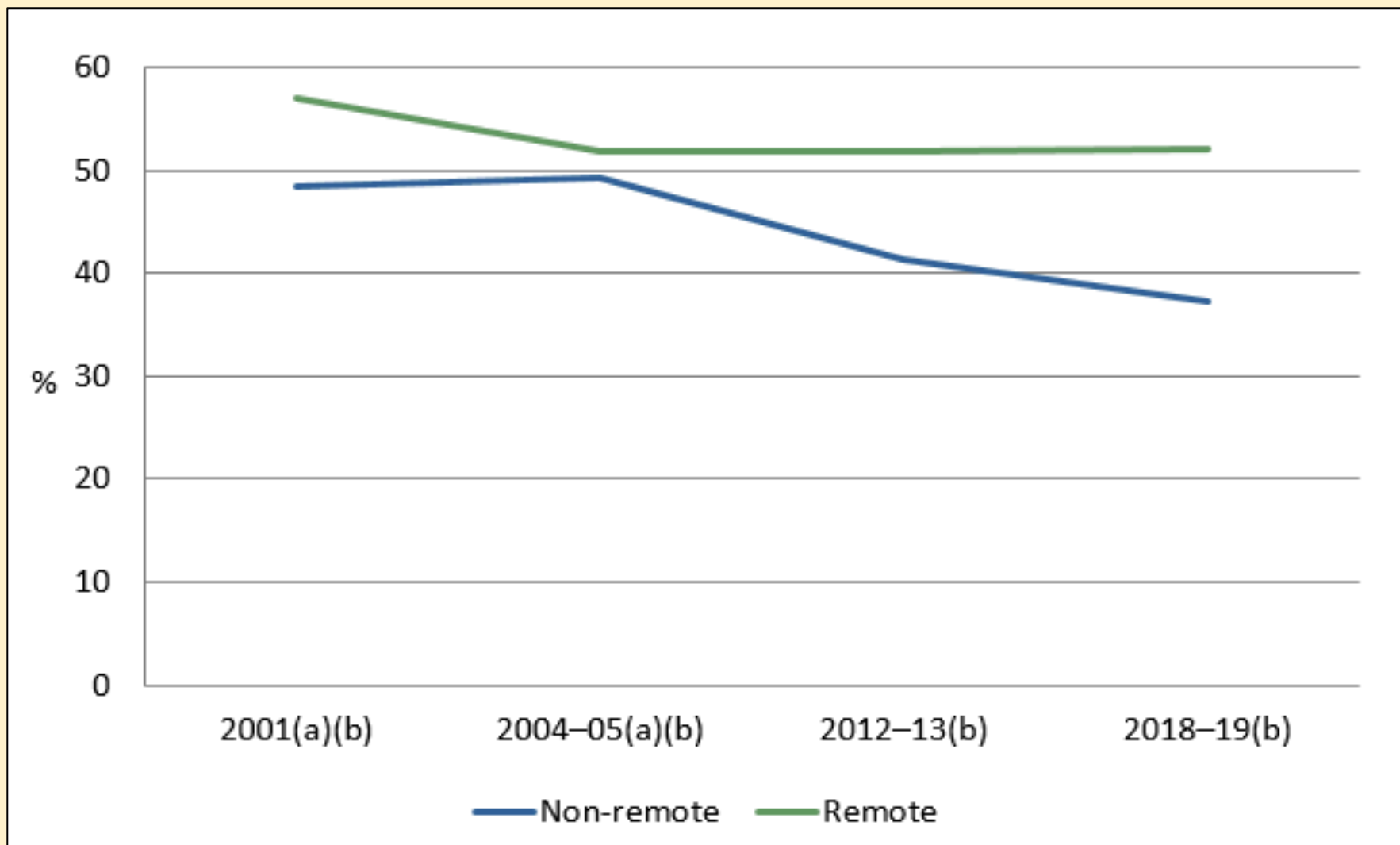
Technical  
Advisory  
Group

(TIS TAG)

# Aboriginal and Torres Strait Islander Smoking

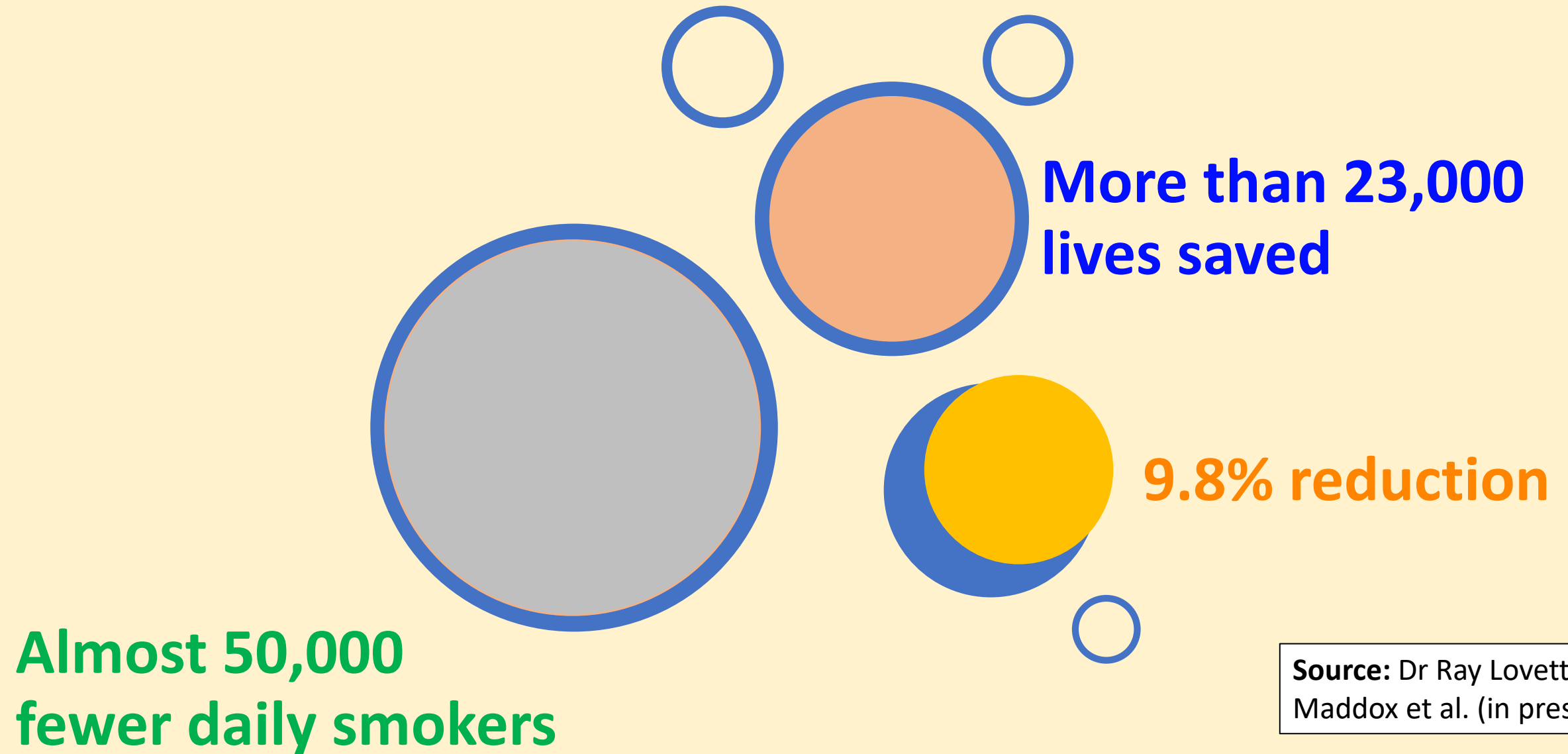


## Current daily smokers, by remoteness, 2001 to 2018–19 Aboriginal and Torres Strait Islander people aged 18 years and over



**Sources:** 2001 National Health Survey, 2004–05 National Aboriginal and Torres Strait Islander Health Survey, 2012–13 National Aboriginal and Torres Strait Islander Health Survey and 2018–19 National Aboriginal and Torres Strait Islander Health Survey

Over the past decade 2004 – 2018/19



**Source:** Dr Ray Lovett  
Maddox et al. (in press)



## Vaping



Peter Hansen died in October last year. (Supplied)

# Autopsy finds man most likely died as a result of vaping

By Michael Atkin

Updated 21 Feb 2022 7:14pm AEDT

**Queensland man Peter Hansen died of a severe lung injury which was probably caused by a decade of vaping.**

### Key points:

Peter Hansen stated vaping when he quit smoking

An autopsy found his death was probably caused by vaping

A CT scan showed severe damage to Mr Hansen's lungs, including ground glass opacities in the lung — a possible sign of EVALI.

"I just saw these quite huge cystic lesions in the apex of his lung," Dr McManus said.

[https://apple.news/AZNJYZvySQqGZ2kNGvh\\_7vw](https://apple.news/AZNJYZvySQqGZ2kNGvh_7vw)



# TIS Family 2019

