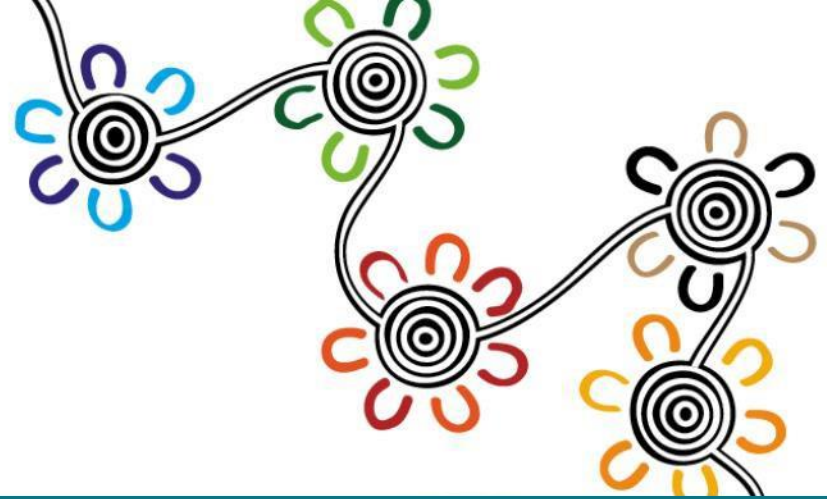


Tammy Abbott and Sharon Forrester
Senior Researchers

NATIONAL BEST
PRACTICE UNIT

TACKLING INDIGENOUS SMOKING



How the Aboriginal Community Researcher (or ACR) program can help TIS teams

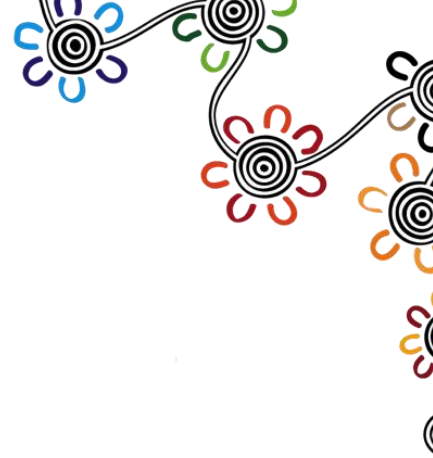


Australian Government

Department of Health







Ada Lechleitner conducting interviews on housing maintenance in Ntaria, NT



Better support to rough sleepers in a country town in South Australia



Purpose: To help local services connect more effectively with a group of up to 80 people, especially those people who are hard-to-reach.

Methods:

1. Semi-structured interviews
2. Focus groups
3. Workshop sessions





NATIONAL BEST
PRACTICE UNIT
**TACKLING
INDIGENOUS
SMOKING**



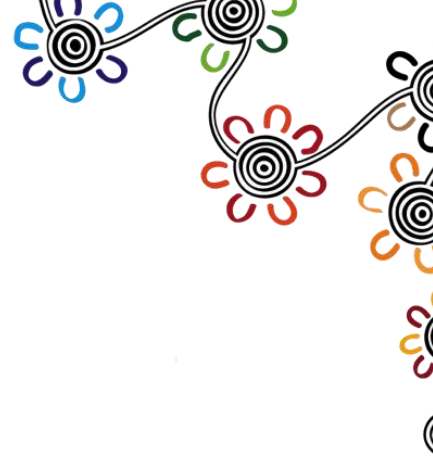
Prevention of Rheumatic Heart Disease in Maningrida, Nov. 2018



NATIONAL BEST
PRACTICE UNIT
**TACKLING
INDIGENOUS
SMOKING**

**Research on vehicle safety by Ninti One at Ntaria,
Northern Territory, 2011 (see Lovell et al, 2011)**

Research to support Collective Impact for Stronger Communities for Children in the NT





How ACRs can help TIS teams

Example: Family Day organised for World No Tobacco Day in Halls Creek, two Fridays ago, 31st May.

The local TIS team of two men from Yura Yungi Aboriginal Medical Service coordinated the event at the main park in town.

Let's say that 200 people came along, ate lunch, heard some speeches by local polities and sports players, visited stalls on health promotion, talked to TIS workers, used the smokerlyzer, saw videos on 'Don't Make Smokes Your Story' and listened to a local band.



How ACRs can help TIS teams

Every research project needs one or more high-level research questions. In this case, there could be a single question:

How effective was the Family Day in helping to tackle Indigenous smoking in Halls Creek?

If there were 200 people coming and going during the event, the TIS workers are going to struggle to do the necessary research on their own.

This is where the ACRs come in.

Ninti One website

NINTI ONE INNOVATION
FOR REMOTE
AUSTRALIA

[ABOUT US](#) [WHAT WE DO](#) [PUBLICATIONS](#) [SUBSCRIBE](#) [CONTACT US](#)

[DONATE](#)



**BUILDING OPPORTUNITIES FOR PEOPLE IN REMOTE AUSTRALIA
THROUGH RESEARCH, INNOVATION AND ENGAGEMENT**

www.nintione.com.au

NATIONAL BEST
PRACTICE UNIT
**TACKLING
INDIGENOUS
SMOKING**

Any questions and further discussion

